

**M HHM**

## A COMMITMENT TO INNOVATION SINCE 1951

HHM has been a leading Swiss provider of electrical and building engineering services for some 70 years. We owe our success to the quality of our employees, who care about our clients and consistently strive to provide better solutions. Our over 280-person team of specialists in electrical engineering, building technology, fire protection and BIM have realised an impressive variety of projects, including the Police and Justice Centre in Zurich, the Roche pRED Innovation Centre in Basel and parts of the Nant de Drance Hydropower Plant.

Thanks to regular advanced training, the HHM team is always at the cutting edge of technology and industry best practice. We are ready to realise a diverse range of projects not just with technical skill and creativity, but also efficiently and ecologically.

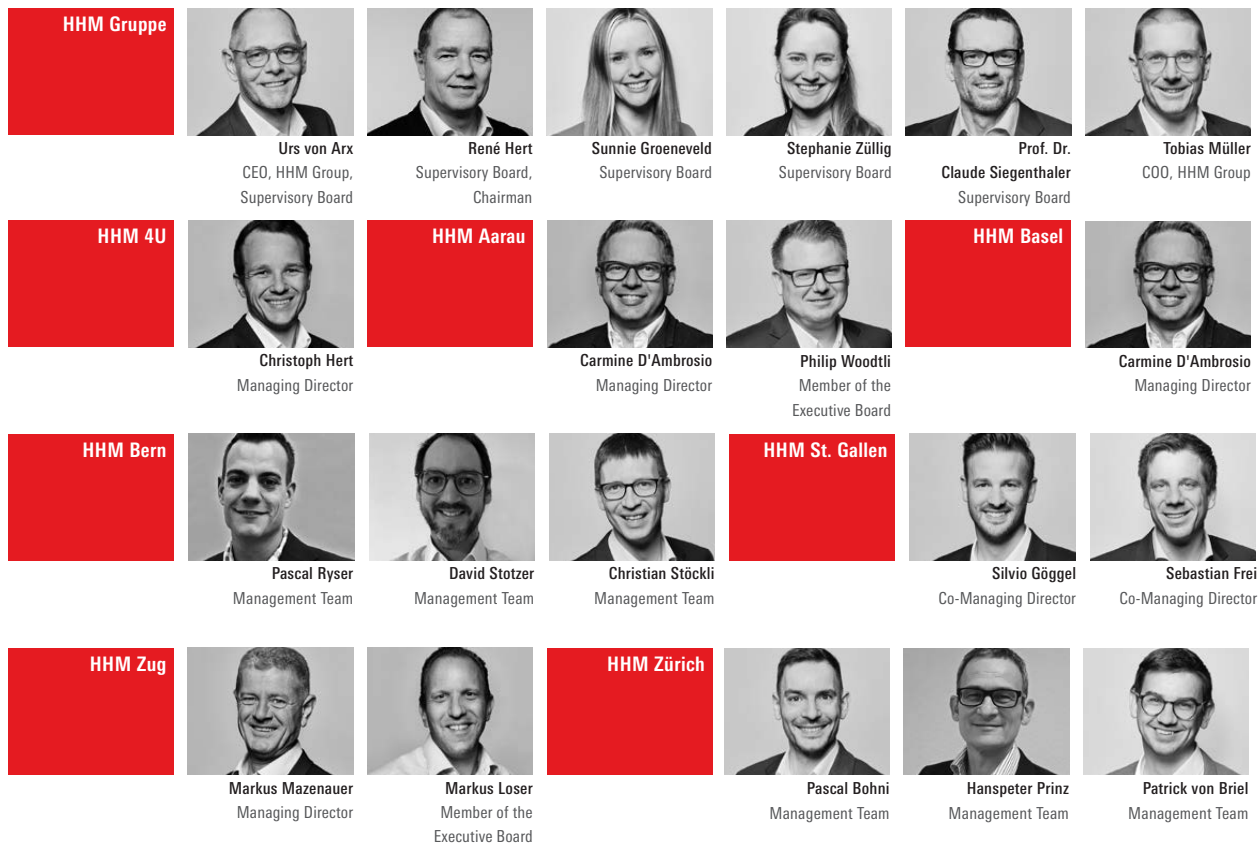
In our 70-year history, we have learned that innovation depends on sharing knowledge. True to this insight, we contribute actively to leading professional associations as well as university teaching.

In 1994, HHM was the first electrical design company in Switzerland to receive ISO 9001 certification for quality management. Furthermore, in May 2015, we were granted the «Recognised for Excellence» award by the European Foundation for Quality Management.





## MANAGEMENT, SUPERVISORY BOARD AND SHAREHOLDERS



## WIDE-RANGING EXPERTISE AND CUTTING-EDGE INFRASTRUCTURE

### ALWAYS CLOSE AT HAND

HMM provides services closely attuned to the needs of its clients throughout German-speaking Switzerland thanks to offices in Aarau, Basel, Bern, St. Gallen/Chur, Zug, and Zurich. HMM's entire service range is available from each of these offices, which work independently but also share knowledge and resources. This means that HMM can draw on a broad pool of in-house specialists to develop unique solutions to special challenges or allocate resources where they are currently needed. State-of-the-art IT systems, including advanced BIM software, facilitate interoffice collaboration and streamline processes while also ensuring the flexible development of efficient and effective solutions.

### BIM

Building Information Modeling (BIM) is a holistic tool for designing and managing complex construction projects. Since 2015 we have realized dozens of projects of varying sizes and types using BIM, and we now possess extensive BIM expertise, including a highly capable team of modelers, application engineers, technicians, and coordinators. In combination with our scalable BIM infrastructure, this expertise ensures optimal conditions for creating, managing, and maintaining BIM models.



## SHAREHOLDERS



Claudia Stejskal



Christoph Wey



Manuel Ammann



Stefan Baumgartner



Roland Bodenmann



Fabian Reck



Adrian Bühler



Regula Felder



Sandro Bachlmayr



Roger Horat



Stefan Leder



Christoph Köchli



Yvo Laib



Markus Hunziker



Simon Vögele



Adrian Lüthi



Pascal Wapf



Simon Ackermann



Alfred Sax



Sandro Bühler



Marco Andrist



Manfred Arnold



Urs Felber



Matthias Huser



Martin Peinsold



Daniel Zurfluh



Andreas Kessler



Haris Smyjilovic



Marco Meier



Tamara Horat



Nicolas von Rotz



Luca Honegger



Sebastian Frick



Marcel Petermann

Long-standing employees make up the executive team of the HHM Group. The company is fully owned by its management.

Foto: Philippe Hubler





**Melanie Santalucia, Projektleiterin Junior**

„The goal of my work is to find optimal solutions for every project and to execute them using modern methods that yield the best results for customers.“



## DIGITAL PLANNING

HHM provides electrical and building engineering services for construction and infrastructure projects. We are experts in energy systems, HVAC, sanitary, electrical, building automation, lighting, security and fire protection. We are also developing new services based on digital solutions in building technology and BIM in order to offer our customers additional value.

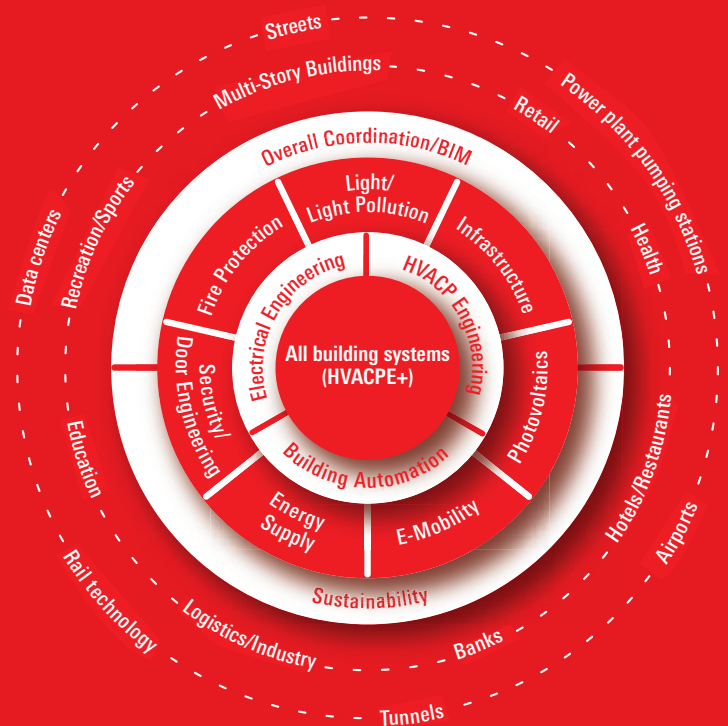
### COMPREHENSIVE BIM SERVICES

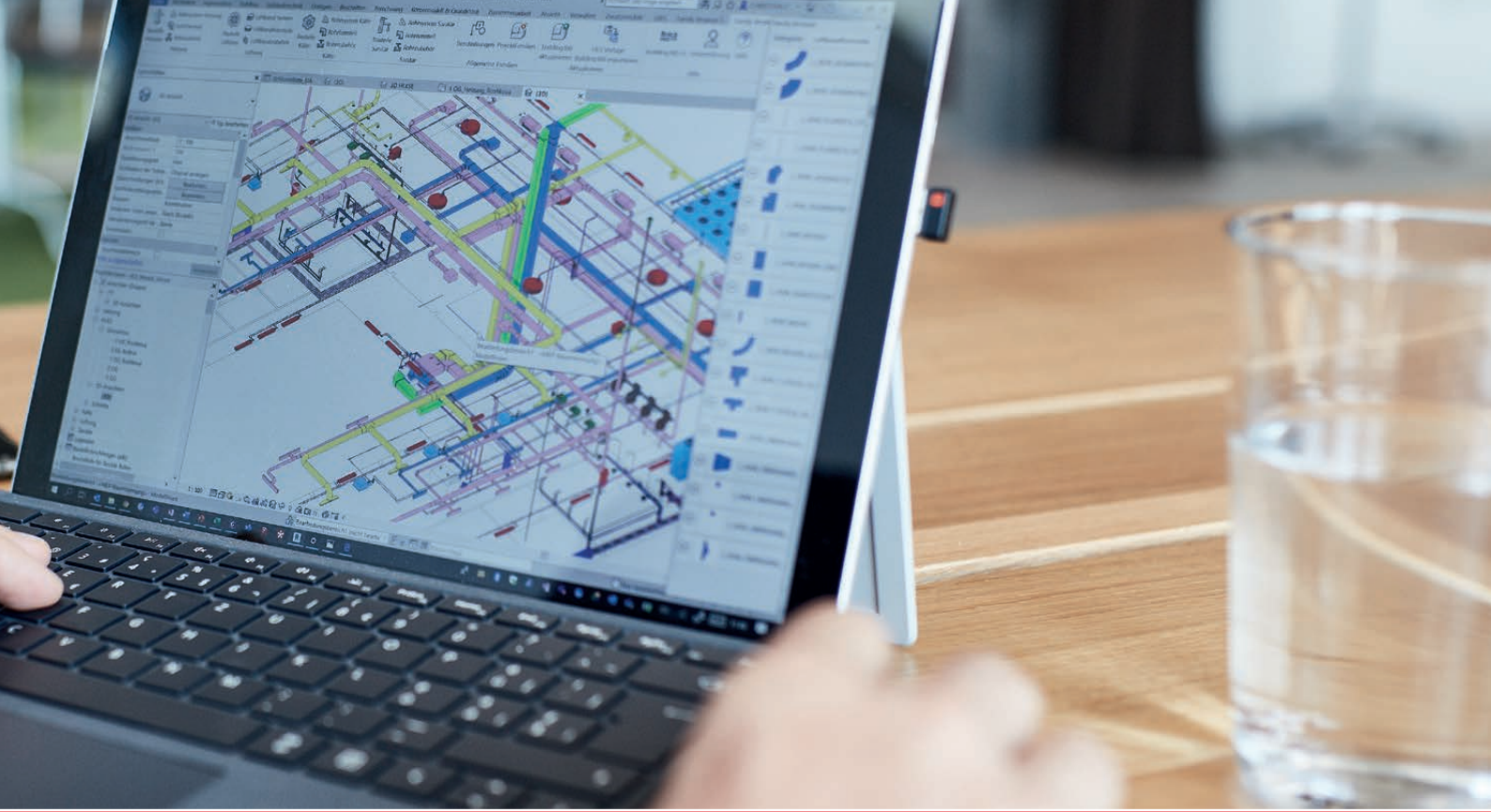
Drawing on our years of engineering expertise, we offer comprehensive building technology planning and BIM services. In contrast to the working practices of most engineering service providers, we offer customers all the benefits of digital planning. Our proprietary BUILDing360 platform has modelling functionality that dramatically improves building planning as well as later operation and maintenance.

**PLANNING:** Electrical engineering and building technology design for energy systems, HVAC, sanitary, electrical, lighting, security, fire protection and building automation.

**BIM CONSULTING:** BIM consulting for builders (support and management) and comprehensive BIM coordination (organisation and supervision of BIM project development).

**COORDINATION:** BIM coordination for on-site building technology.





## COMPREHENSIVE ENGINEERING SERVICES FOR DEMANDING CONSTRUCTION PROJECTS

**TOTAL BUILDING ENGINEERING (HVAC+):** Our comprehensive planning and engineering approach assures building systems that are optimally integrated, sustainable, and highly functional. To this end, we simplify communication between systems, reduce complexity, and use advanced project-management methods, including integrated project delivery (IPD).

**ELECTRICAL ENGINEERING:** Our full-spectrum engineering and consulting services depend in no small part on our robust competencies in the area of electrical engineering. Our holistic approach to the planning of electro-technical systems optimally serves current needs while also anticipating future ones, thus protecting the value of capital investments.

**BUILDING AUTOMATION:** Cutting-edge building automation now has major crossover with IT. We assure the optimal integration building automation systems, from security and safety features to HVAC, lighting, and communications.

**POWER SUPPLY:** Power utility systems are an important element of a well-designed project, as electrical power is the lifeblood of a building and its systems. Security of supply and associated strategies for assuring operational resilience are important topics given current challenges in power markets.

**PHOTOVOLTAICS & E-MOBILITY:** Solar PV can make an important contribution to fulfilling climate targets. The demand

for on-site PV solutions is extremely high, not least given the expansion of electric vehicle fleets and risk of grid outages. A holistic planning perspective is essential for designing PV systems in a manner that guarantees lasting security of investment.

**LIGHTING & LIGHT POLLUTION:** We design indoor and outdoor lighting concepts in close cooperation with architects, project developers, and planning authorities. Our product-neutral concepts not only exhibit a flair for creative design, but also optimally balance cost-effectiveness and sustainability – even given highly demanding specifications.

**SAFETY & SECURITY SYSTEMS:** The holistic planning of safety and security systems is essential for neutralizing threats and ensuring a coordinated response to emergencies. HHM develops targeted safety and security concepts, including associated fire protection measures, and supports their realization from initial conception to final commissioning.

**INFRASTRUCTURE PLANNING:** Well-planned infrastructure forms the backbone of modern economies. We have expertise in public-transport infrastructure development and rail-system maintenance, as well as in IT systems planning and installation, including data centers.

## CUSTOMISED SOLUTIONS

Our primary aim is to serve the needs of our clients. By taking time for discussion and careful analysis, we help them precisely identify their requirements – both now and in the future. In this way, we develop concepts that are closely tailored to our clients' objectives, ensuring maximum return on investment. As a professional engineering firm, we are ethically committed to finding optimal solutions. This is why we insist on offering an unbiased perspective that gives no preference to construction contractors. Our independence gives us the freedom to make the best choices available for a given project. Integrity and reliability are also paramount at HHM. We put great value on finishing projects on budget and on time.



### HHM AT A GLANCE

HHM leverages over 70 years of experience in the industry as well as certified expertise in building information modeling (BIM) to realize challenging and forward-looking projects. With over 280 employees distributed across seven offices that work independently using cutting-edge methods but which pool resources to tackle projects, we guarantee close proximity to customers and continuous support throughout German-speaking Switzerland.

We are experts in building systems technology and electrical engineering for construction and infrastructure projects. Our broad service range encompasses HVAC, building automation, utility systems, photovoltaics, e-mobility, lighting, security, door engineering, and fire protection.

We exploit advanced IT tools as well as synergies between BIM and building systems to provide custom solutions that not only greatly exceed the traditional scope of engineering services but which also create clear added value for our customers.





**Matthias Huser, Electrical  
Engineering Project Director**

„What drives me each day is developing the best systems solution that meets the needs of everyone involved in the project.“



**Lea Grunder, electrical systems engineer**

„BIM has clear advantages in the construction planning process. By improving collaboration between relevant parties, it allows details to be clarified well in advance and optimal solutions to be found. Encompassing much more than just electrical engineering, BIM also cuts across various engineering domains – this is a fascinating aspect of the technology.“

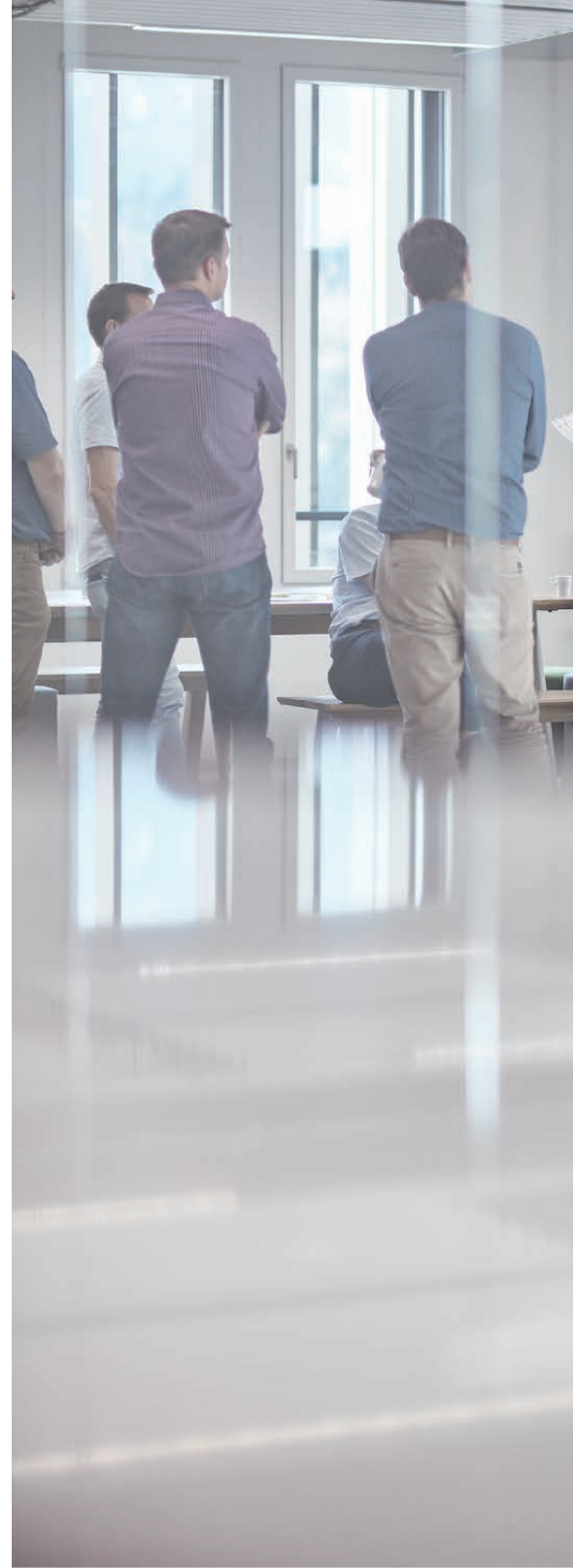


## SHAPING THE FUTURE IN THE ECOSYSTEM

Engineering service providers are expected to develop expert solutions for clients who expect precision and dependability. Innovation, by contrast, always involves a degree of uncertainty and experimentation. Yet at HHM, innovation not only shapes our technology; it permeates our very culture. We employ a repertoire of techniques for developing new solutions with real benefit for our clients.

Our commitment to innovation extends to the HHM Academy – which is devoted to fostering talented professionals – and to our involvement in founding the Central Switzerland Innovation Park in Rotkreuz. Awareness for the importance of innovation also informs our enterprise development. Amidst today's challenges, the right solutions increasingly depend on successful open-innovation initiatives. Finding them means looking outwards, not inwards, embracing the larger ecosystem and striking out on new paths. We work together with our clients and partners to test out new approaches and expand the range of the possible.

We're Switzerland Innovation Park Central Member





## WORKING TOGETHER TO DEVELOP NEW PERSPECTIVES FOR THE FUTURE

The development of talented professionals starts with teaching the essentials and ends with focused advanced training. Both have a long tradition at HHM. Our in-house HHM Academy offers a range of seminars and courses. Each year, our staff attend more than 2,500 hours of class. The HHM Academy also trains experienced cadres in technical expertise and in leadership. The time and effort we expend on advanced training are considerable, but the return on investment is impressive.

The HHM Academy has become an inseparable part of HHM's collective culture. Highly trained workers increase profitability. They also have a role model function, attracting new talent. Yet the HHM Academy is not just a place for learning, but also for interpersonal engagement and creativity. In a new program called the «HHM Innovation Journey» for example, employees collaborate to discuss trends and identify business opportunities. In a rapidly changing world, such tools for encouraging

**HEFTI. HESS. MARTIGNONI.**

Holding AG · Feldpark 29 · 6300 Zug · Tel. 058 520 40 00 · holding@hhm.ch

**HEFTI. HESS. MARTIGNONI.**

4U AG · Neumattstrasse 13 · Postfach · 5001 Aarau · Tel. 058 520 40 00 · 4u@hhm.ch

**HEFTI. HESS. MARTIGNONI.**

Aarau AG · Neumattstrasse 13 · Postfach · 5001 Aarau · Tel. 058 520 40 00 · aarau@hhm.ch

**HEFTI. HESS. MARTIGNONI.**

Basel AG · Innere Margarethenstrasse 5 · 4051 Basel · Tel. 058 520 40 00 · basel@hhm.ch

**HEFTI. HESS. MARTIGNONI.**

Bern AG · Zieglerstrasse 29 · 3007 Bern · Tel. 058 520 40 00 · bern@hhm.ch

**HEFTI. HESS. MARTIGNONI.**

St. Gallen AG · Ikarusstrasse 9 · 9015 St. Gallen · Tel. 058 520 40 00 · stgallen@hhm.ch  
 Niederlassung Chur: Triststrasse 8 · 7000 Chur · Tel. 058 520 40 00 · stgallen@hhm.ch

**HEFTI. HESS. MARTIGNONI.**

Zug AG · Zugerstrasse 71 · Postfach · 6302 Zug · Tel. 058 520 40 00 · zug@hhm.ch

**HEFTI. HESS. MARTIGNONI.**

Zürich AG · Josefstrasse 212 · Postfach · 8005 Zürich · Tel. 058 520 40 00 · zuerich@hhm.ch

[www.hhm.ch](http://www.hhm.ch)